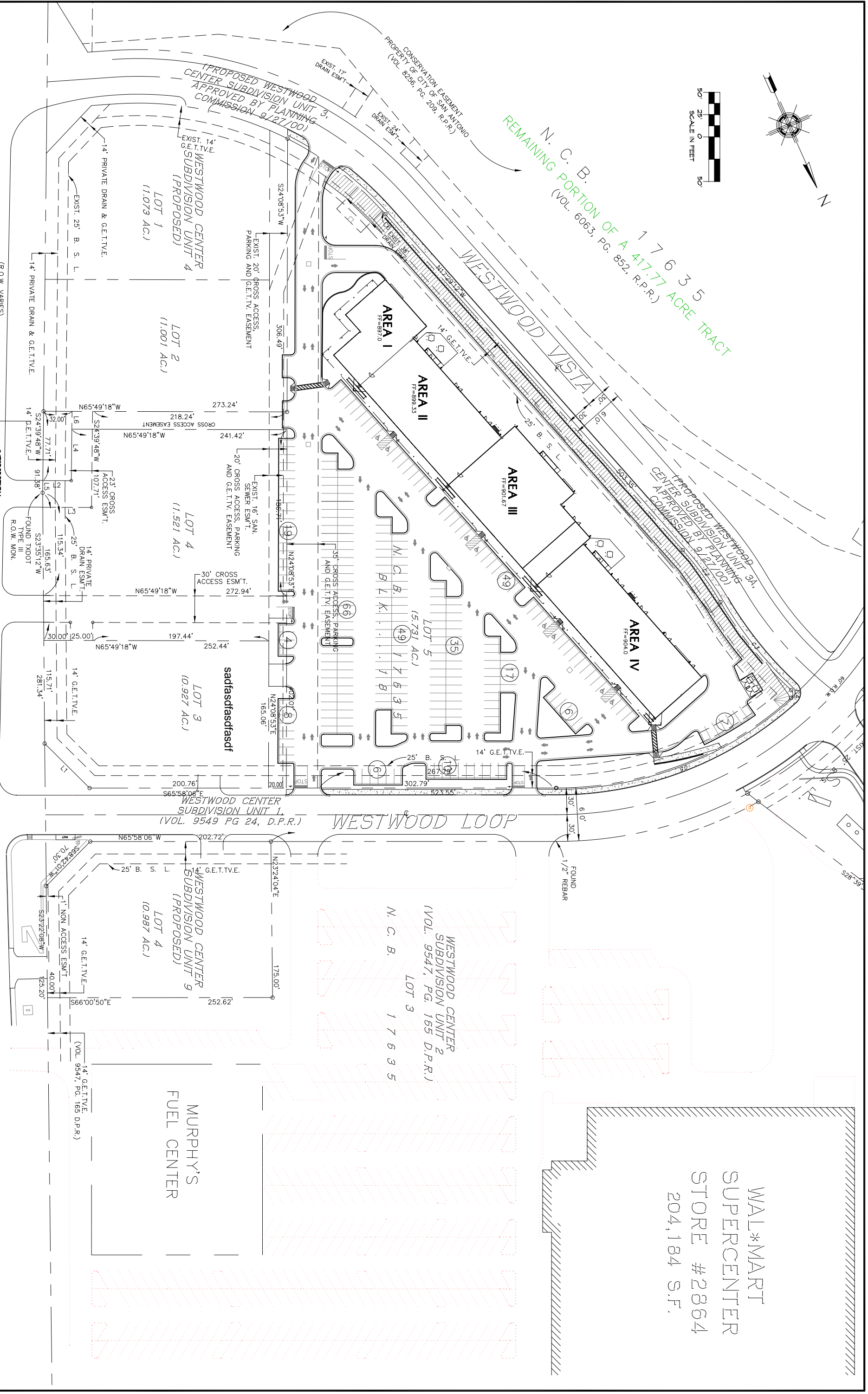


1 7 6 3 5
N. C. B. B. WESTWOOD CENTER SUBDIVISION UNIT 3A, APPROVED BY PLANNING COMMISSION 9/27/00
REMAINING PORTION OF A 417.77 ACRE TRACT
(VOL. 6063, PG. 852, R.P.R.)



WAL*MART
SUPERCENTER
STORE #2864
204,184 S.F.

MURPHY'S
FUEL CENTER

WESTWOOD LOOP

WESTWOOD CENTER SUBDIVISION UNIT 1, (VOL. 9549 PG 24, D.P.R.)

WESTWOOD CENTER SUBDIVISION UNIT 2 (VOL. 9547, PG. 165 D.P.R.)
LOT 3 1 7 6 3 5

WESTWOOD CENTER SUBDIVISION UNIT 9 (PROPOSED)
LOT 4 (0.987 AC.)

LOT 3 (0.987 AC.)
sadfasdfasdfsdf

LOT 4 (1.521 AC.)

LOT 2 (1.001 AC.)

LOT 1 (1.073 AC.)
WESTWOOD CENTER SUBDIVISION UNIT 4 (PROPOSED)

WESTWOOD VISTA SHOPPING CENTER

6511 LOOP 1604 @ CULEBRA ROAD

CITY OF SAN ANTONIO, TEXAS